



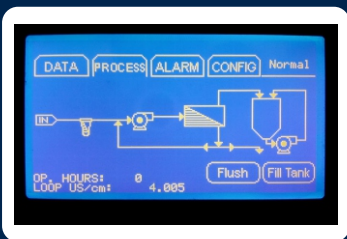
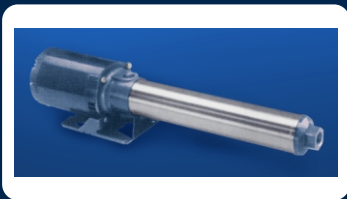
CWRO 4040-C Reverse Osmosis System

Compact Reverse Osmosis System for Water Store

The Clearwater CWRO 4040 2.3-C series of compact reverse osmosis systems are built for medium duty applications but with many high performance features typically found only on larger units. A programmable logic controller (PLC) controls RO functions and integrates with the conductivity meter to activate and deactivate the permeate divert assuring optimum water quality. These units may be configured for permeate rates from 1-3 GPM (4-11 L/min) and occupy only 3.3ft² (0.3m²) of floor space.



We Use Quality Components From:



- Pure water production 1-3 GPM (4-11 L/min)
- Hydranautics ESPA membranes for maximum efficiency, high rejection and production.
- Product water divert valve activated upon system startup to flush pure water lines and in the case that product water quality is below setpoint.
- Panel mounted flow meters.
- LCD Display for water quality and alarm.
- Isolation / Divert valves to facilitate optimum membrane cleaning.
- Stainless Steel high pressure piping.
- Stainless steel multi-stage centrifugal pump.
- Stainless Steel welded structure for corrosion resistance and enduring appearance.

clearwater systems

7-1076 Cardiff Blvd.
Mississauga ON L5S 1M4
CANADA

Tel. 416.251.3156
Fax. 416.251.3159
www.clearh2o.ca